



House 2 Home

REAL ESTATE



605.937.9595 | www.house2homesd.com

605.988.4611 | www.nielsonconstruction.net

9231-9235 W LAVERNE WIPF STREET

WestView Estates - West Sioux Falls

**9231
SOLD**

**9233
\$281,800**

**9235
SOLD**



similar to image

9227



2 bed



2.5 bath



2 car



1531 sf

9225 &
9229

3 bed

2 bath

2 car

1280 sf

Features and Amenities

- slab on grade
- 2 story middle unit
- 2 stall driveway
- steel garage doors
- zero entry
- HOA
- full yard
- covered concrete patio
- tiled master shower
- tiled kitchen splash
- end units: fireplace

Images included in flyer are for marketing purposes only and may not represent completed home. Pricing subject to change.

Amy Evans

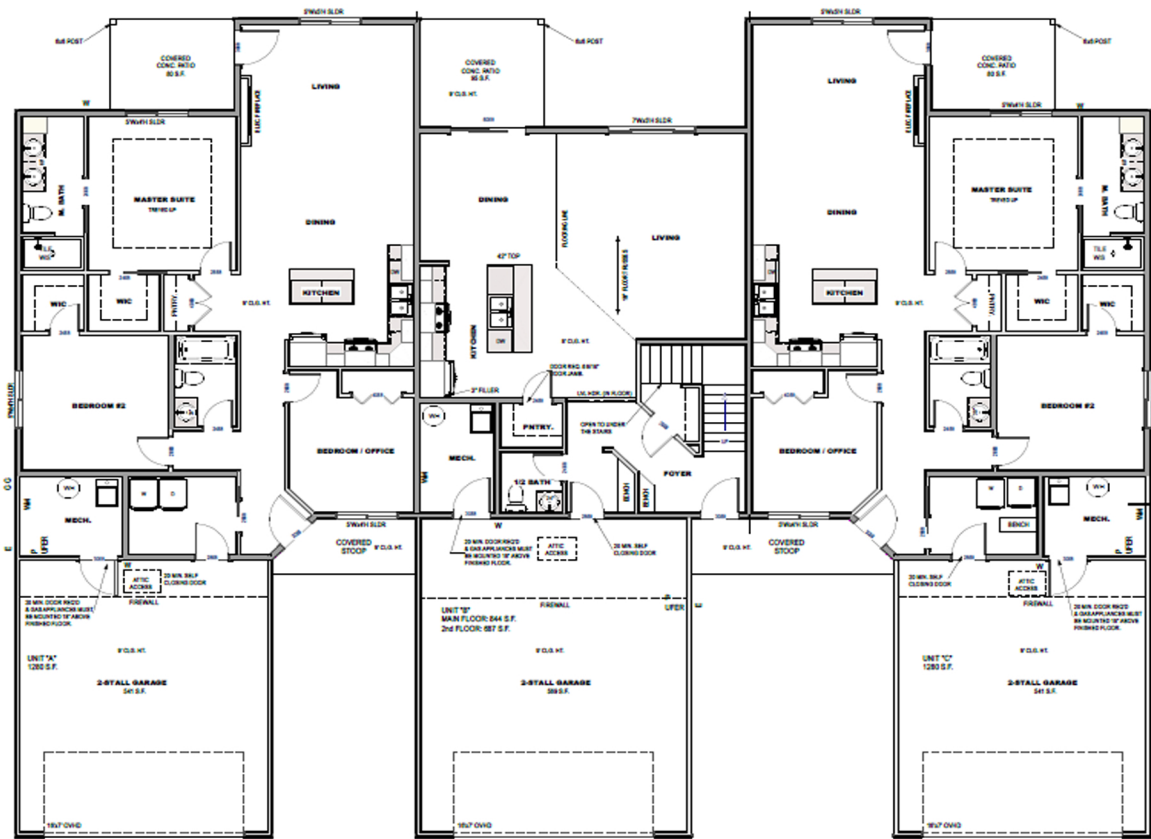
REALTOR | 605.400.3784
AMY@NIELSONCONSTRUCTION.NET



LOOKING FOR MORE?

Scan to view all available
homes from Nielson Construction.

03.07.2023



driftwood



MIDDLE UNIT UPPER LEVEL



2ND FLOOR