

# 9231-9235 W LAVERNE WIPF STREET

WestView Estates - West Sioux Falls

**9231**  
**\$308,800**

**9233**  
**\$281,800**

**9235**  
**SOLD**



*similar to image*



2 bed



2.5 bath



2 car



1531 sf

9231 &  
9235

3 bed

2 bath

2 car

1280 sf

## Features and Amenities

- slab on grade
- 2 story middle unit
- 2 stall driveway
- steel garage doors
- zero entry

- HOA
- full yard
- covered concrete patio
- tiled master shower
- tiled kitchen splash
- end units: fireplace

Images included in flyer are for marketing purposes only and may not represent completed home. Pricing subject to change.

*Amy Evans*

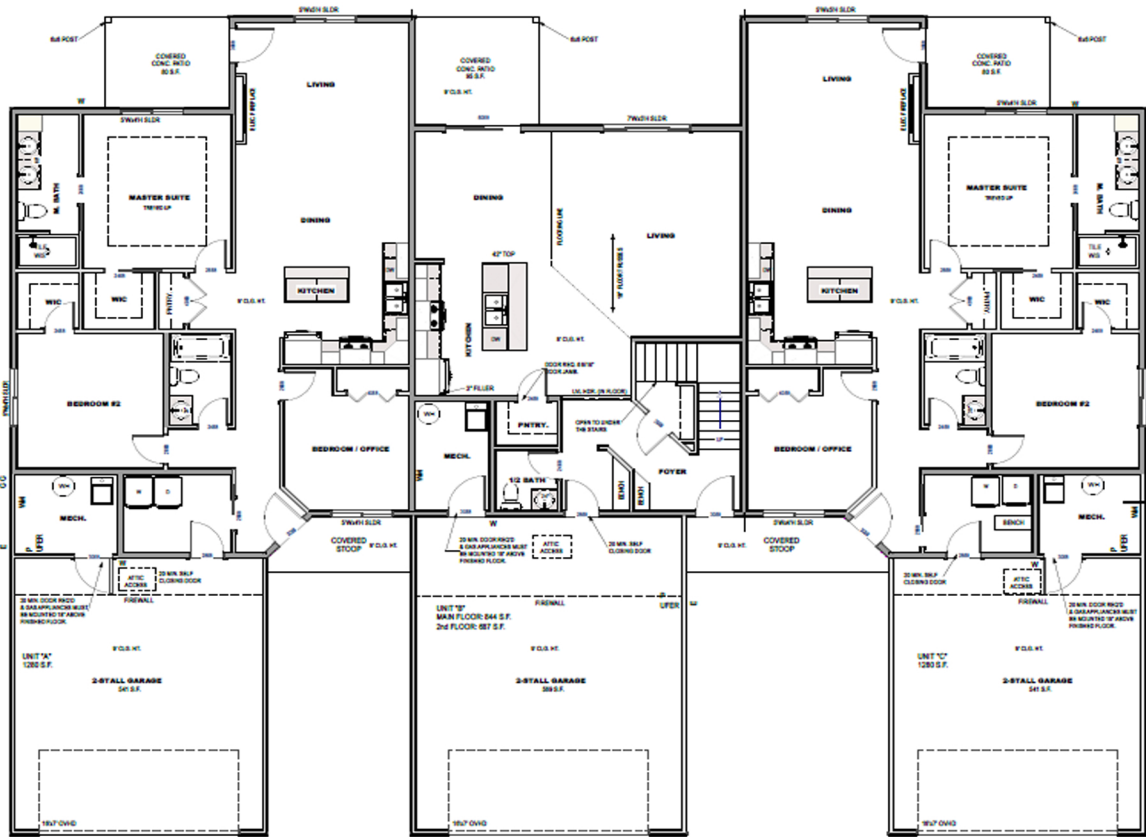
REALTOR | 605.400.3784  
AMY@NIELSONCONSTRUCTION.NET



LOOKING FOR MORE?

Scan to view all available  
homes from Nielson Construction.

08.11.2023



driftwood



## MIDDLE UNIT UPPER LEVEL



2ND FLOOR