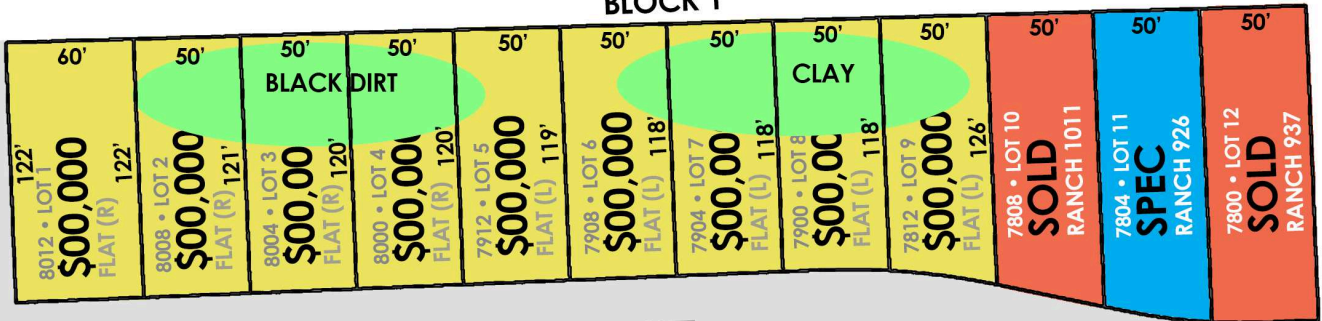


11/13/17

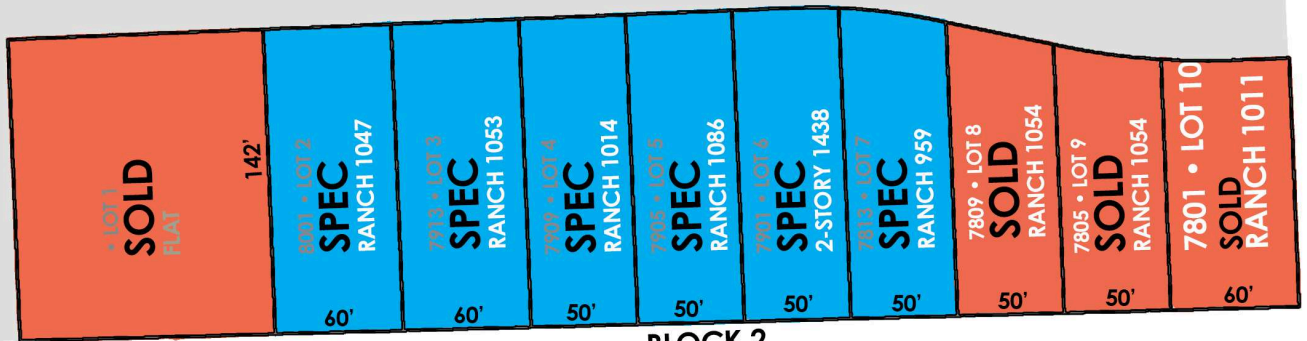


**BLOCK 1**



**W 65TH ST**

**TEA ELLIS RD**



**BLOCK 2**

AVAILABLE
  SPEC
  ON HOLD
  SOLD

PRICES ARE  
SUBJECT  
TO CHANGE  
WITHOUT NOTICE

DIMENSIONS ARE  
FOR MARKETING  
PURPOSES ONLY