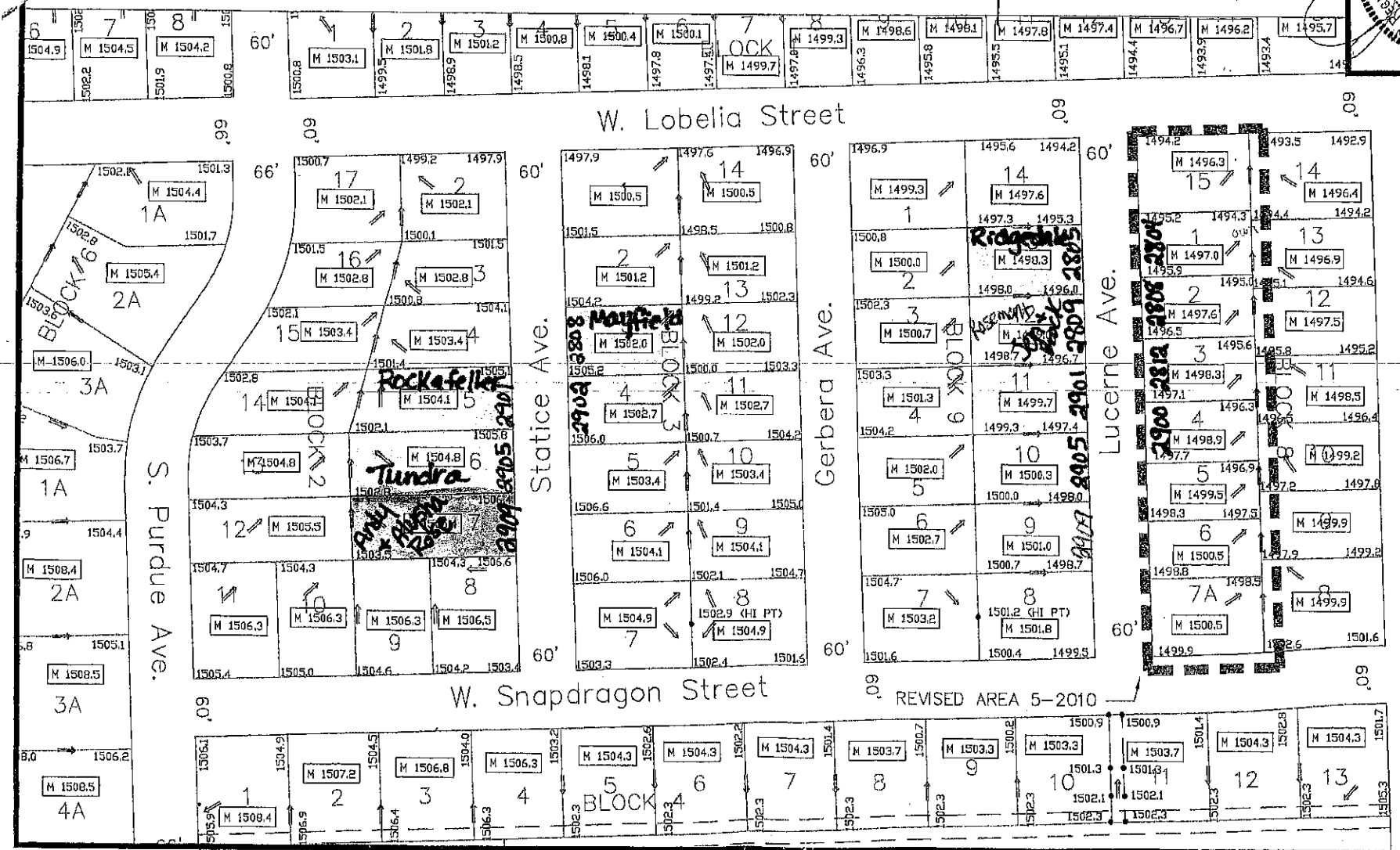
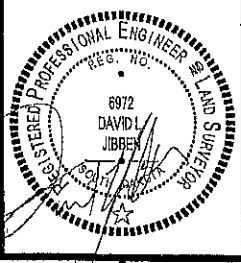


KN Construction, Inc. Great West Side Lots

PLEASE SEE PREVIOUSLY APPROVED
FINAL PLANS FOR DRAINAGE AND STORM
SEWER DATA.

REVISIONS



DESIGN AND DEVELOP ENGINEERING, LLC
600 LAKEVIEW CIRCLE
TEA, SD 57054
PHONE: (605) 214-1083
davejibben@tve.net

ELROD ADDITION
REVISED FINAL PLANS - PHASE 1
GRADING AND DRAINAGE PLAN

DESIGNED BY: DJL
DRAWN BY: DJL
PROJECT: 20080
DRAWING: 70080-27-000
DATE: 5-2010

SHEET NO. 4

41st Street