

2015 S SONOMA PL

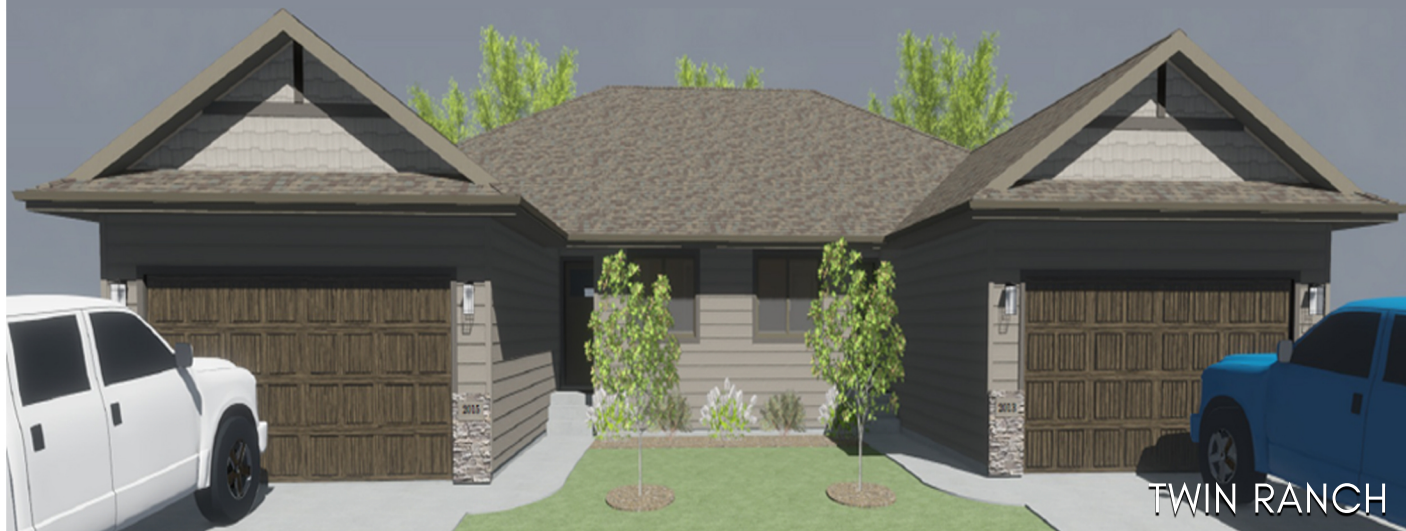
Westview Estates - West Sioux Falls, SD

SOLD

2013 S SONOMA PL

Westview Estates - West Sioux Falls, SD

\$429,800



Images included in flyer are for marketing purposes only and may not represent completed home. Pricing subject to change.



4 bedrooms



3 bathrooms



2 car garage



2166 sq. ft.

Features and Amenities

- ranch style
- new construction
- fully finished
- HOA
- finished garage
- granite/onyx counters
- tiled master shower
- tiled kitchen splash
- covered deck
- full yard



4 bedrooms



3 bathrooms



2 car garage



2166 sq. ft.

Features and Amenities

- ranch style
- new construction
- fully finished
- HOA
- finished garage
- granite/onyx counters
- tiled master shower
- tiled kitchen splash
- covered deck
- full yard

Amy Evans

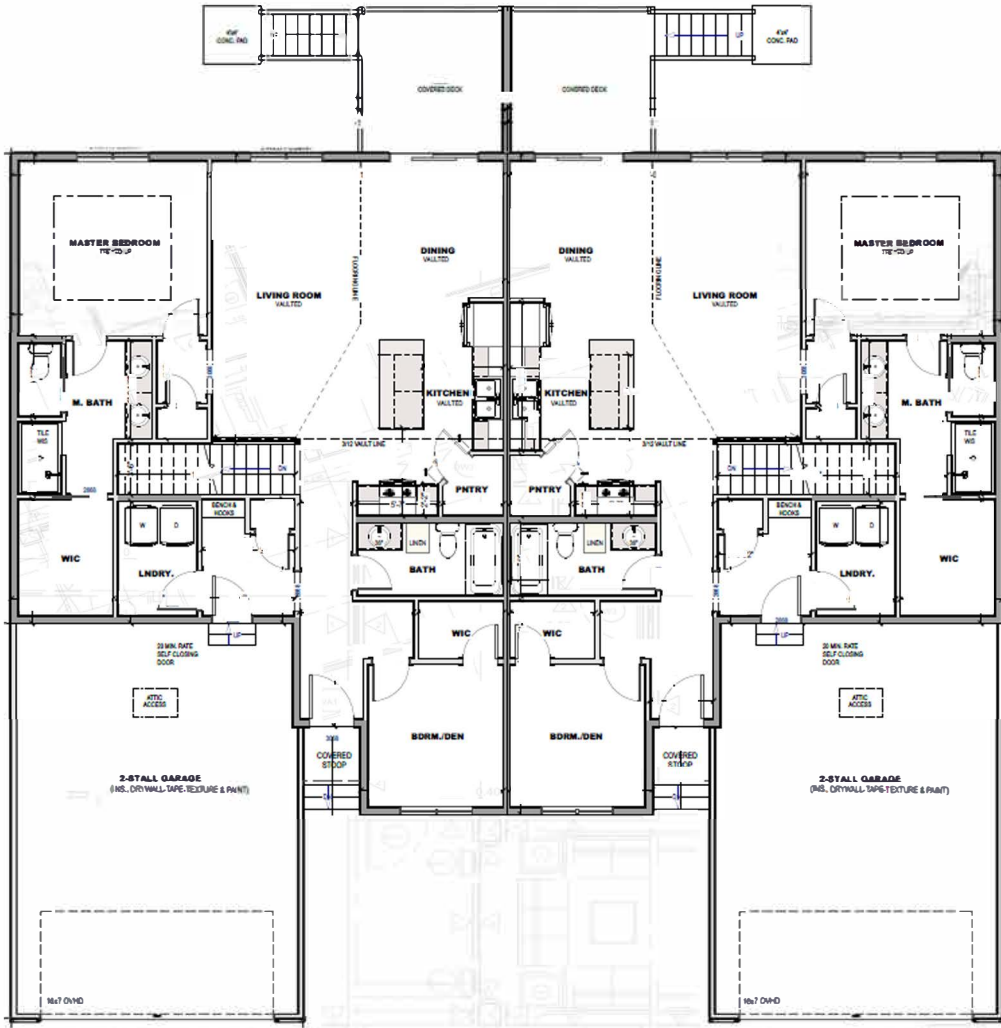
REALTOR | 605.400.3784
AMY@NIELSONCONSTRUCTION.NET



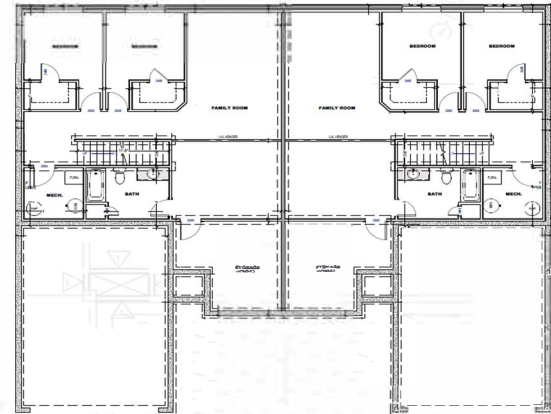
605.988.4611 | www.nielsonconstruction.net



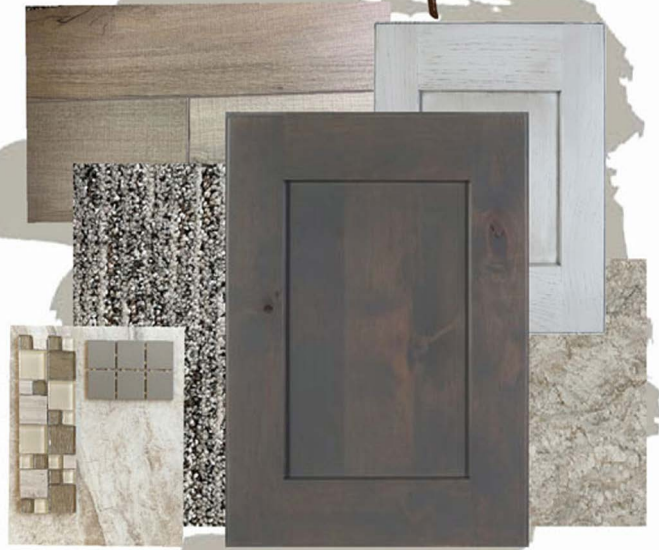
605.937.9595 | www.house2homesd.com



LOWER LEVEL



driftwood



Selection package included is for marketing use only. Features and finishes may not be identical to completed home.