

2021 S SONOMA PL

Westview Estates - West Sioux Falls, SD

\$472,800

2019 S SONOMA PL

Westview Estates - West Sioux Falls, SD

SOLD



Images included in flyer are for marketing purposes only and may not represent completed home. Pricing subject to change.



4 bedrooms



3 bathrooms



2 car garage



2323 sq. ft.

Features and Amenities

- ranch style
- new construction
- fully finished
- HOA
- finished garage
- sunroom
- granite/onyx counters
- tiled master shower
- tiled kitchen splash
- covered deck
- full yard



4 bedrooms



3 bathrooms



2 car garage



2328 sq. ft.

Features and Amenities

- ranch style
- new construction
- fully finished
- HOA
- finished garage
- sunroom
- granite/onyx counters
- tiled master shower
- tiled kitchen splash
- covered deck
- full yard

Amy Evans

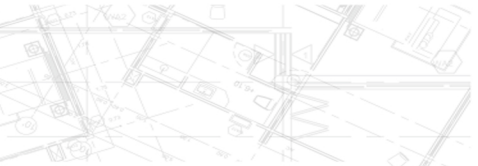
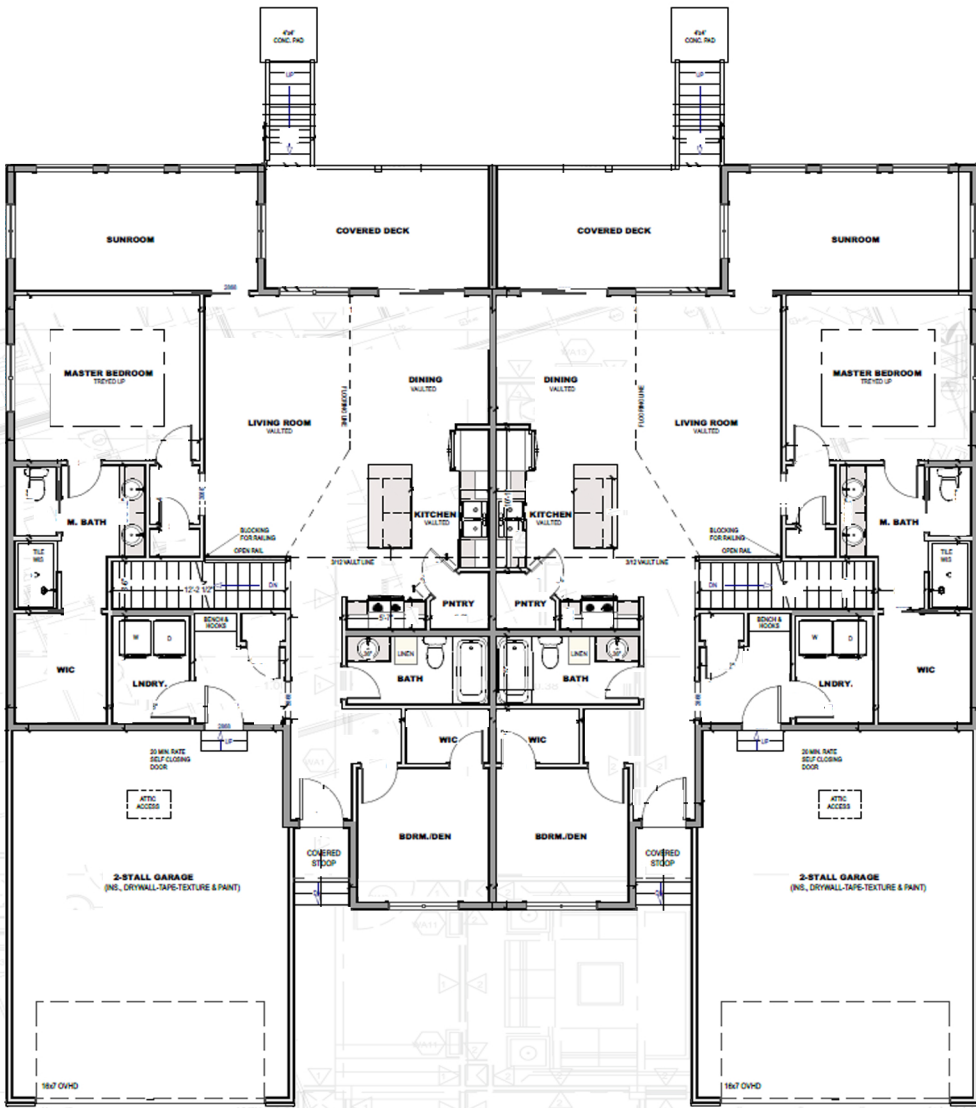
REALTOR | 605.400.3784
AMY@NIELSONCONSTRUCTION.NET



605.988.4611 | www.nielsonconstruction.net



605.937.9595 | www.house2homesd.com



LOWER LEVEL

