

9213 W LAVERNE WIPF STREET

WestView Estates - West Sioux Falls





**9209
SOLD**

**9211
SOLD**

**9213
\$308,800**



similar to image

	9211	9213
	2 bed	3 bed
	2.5 bath	2 bath
	2 car	2 car
	1531 sf	1280 sf

Features and Amenities

- slab on grade
- 2 story middle unit
- 2 stall driveway
- steel garage doors
- zero entry
- HOA
- full yard
- covered concrete patio
- tiled master shower
- tiled kitchen splash

Images included in flyer are for marketing purposes only and may not represent completed home. Pricing subject to change.

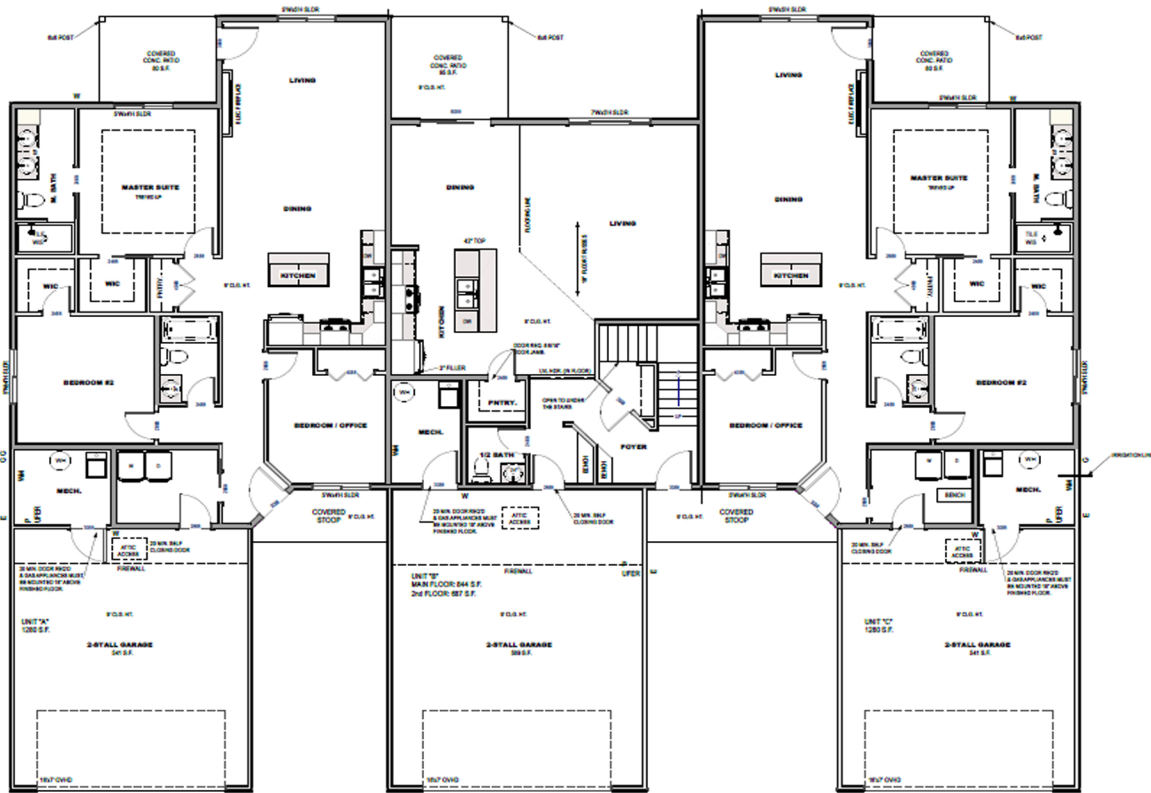
Amy Evans

REALTOR | 605.400.3784
AMY@NIELSONCONSTRUCTION.NET



LOOKING FOR MORE?

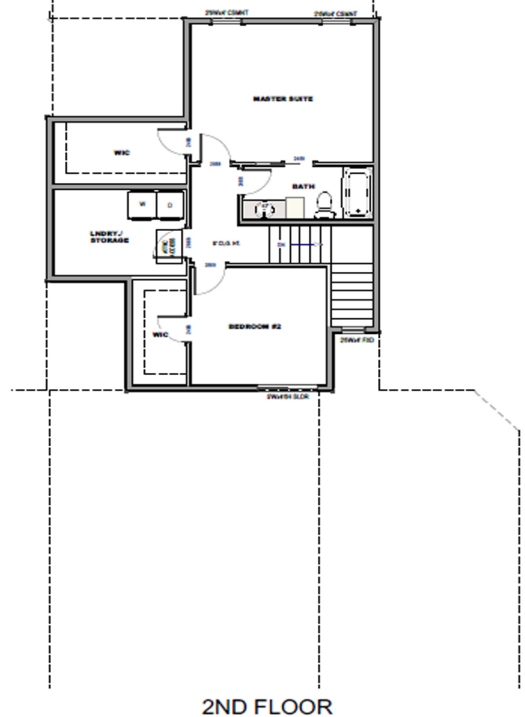
Scan to view all available homes from Nielson Construction.



driftwood



**MIDDLE UNIT
UPPER LEVEL**



2ND FLOOR

Selection package included is for marketing use only. Features and finishes may not be identical to completed home.

