

325 N EVEREST AVE

Pinnacle Estates - Tea, SD

\$338,800



07.05.2023



3 bedrooms



2 bathrooms



3 car garage



1227 sq. ft.

Features and Amenities

- slab on grade
- vaulted ceilings
- pantry
- steel garage doors
- modern exterior
- covered concrete patio
- tiled master shower

Images included in flyer are for marketing purposes only and may not represent completed home. Pricing subject to change.



Lexie Ricci

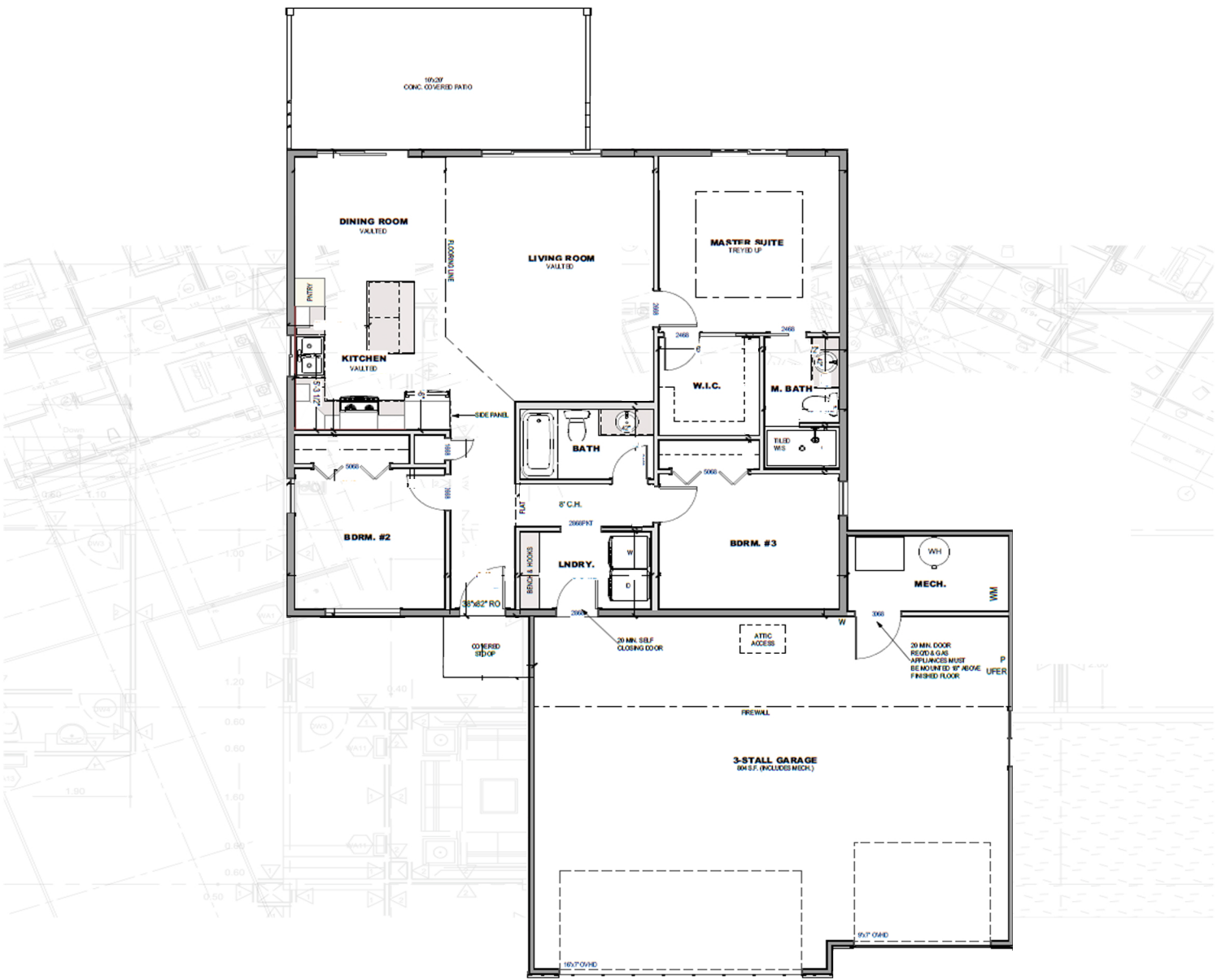
SALES MANAGER | 605.988.4611
LEXIE@NIELSONCONSTRUCTION.NET



605.988.4611 | www.nielsonconstruction.net



605.937.9595 | www.house2homesd.com



natural



Selection package included is for marketing use only. Features and finishes may not be identical to completed home.

