

9231-9235 W LAVERNE WIPF STREET

WestView Estates - West Sioux Falls





9231
\$308,800

9233
SOLD

9235
SOLD



similar to image

	9233	9231 & 9235
	2 bed	3 bed
	2.5 bath	2 bath
	2 car	2 car
	1531 sf	1280 sf

Features and Amenities

- slab on grade
- 2 story middle unit
- 2 stall driveway
- steel garage doors
- zero entry
- HOA
- full yard
- covered concrete patio
- tiled master shower
- tiled kitchen splash
- end units: fireplace

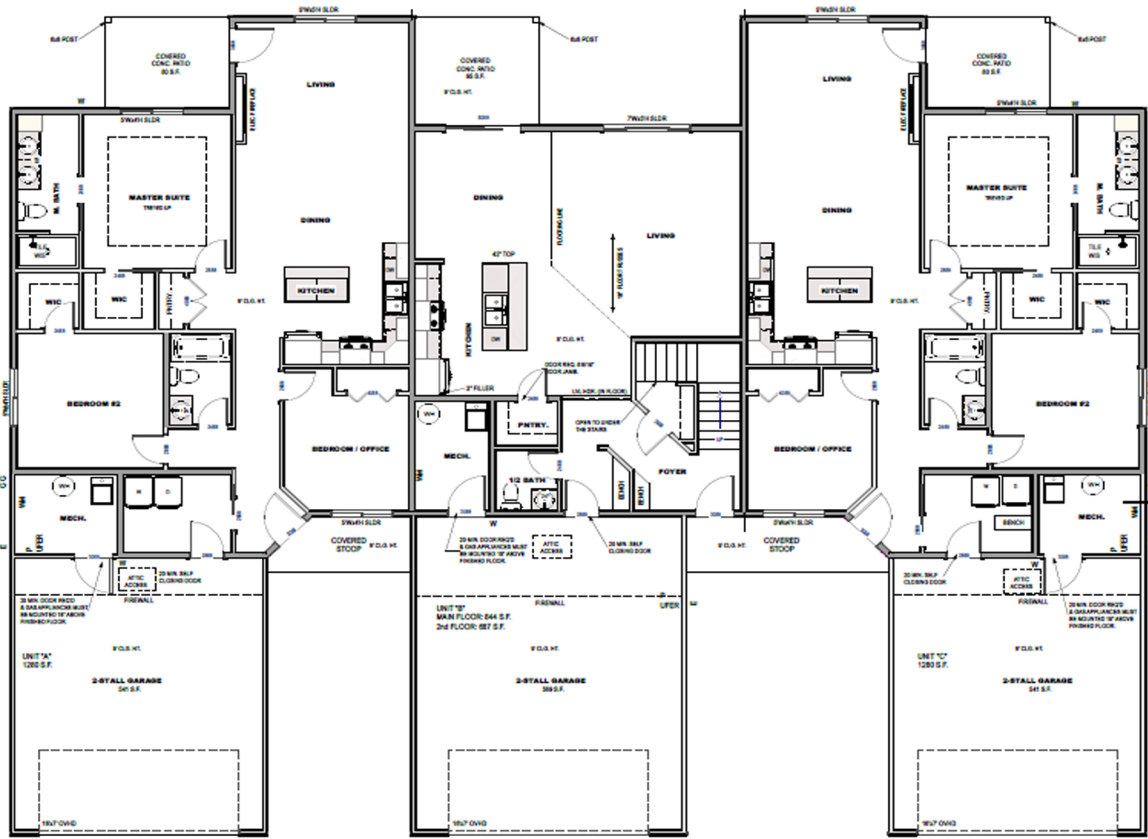
Images included in flyer are for marketing purposes only and may not represent completed home. Pricing subject to change.

Amy Evans

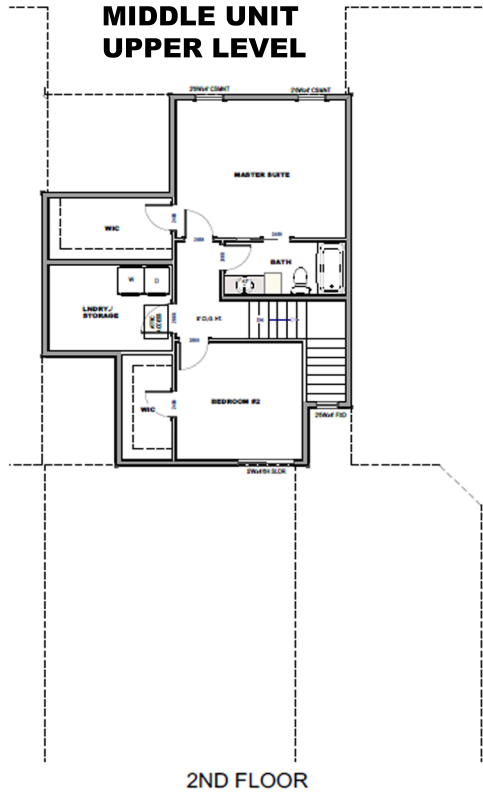
REALTOR | 605.400.3784
AMY@NIELSONCONSTRUCTION.NET



LOOKING FOR MORE?
Scan to view all available
homes from Nielson Construction.



driftwood



Selection package included is for marketing use only. Features and finishes may not be identical to completed home.

