

2308 S SADIE AVENUE

Sunset Creek - West Sioux Falls, SD

\$328,800



03.26.2024



2 bedrooms



2 bathrooms



2 car garage



1031 sq. ft.

Features and Amenities

- ranch style
- vaulted ceilings
- main floor laundry
- steel garage doors
- deck with stairs
- front covered stoop

Images included in flyer are for marketing purposes only and may not represent completed home. Pricing subject to change.



Lexie Ricci

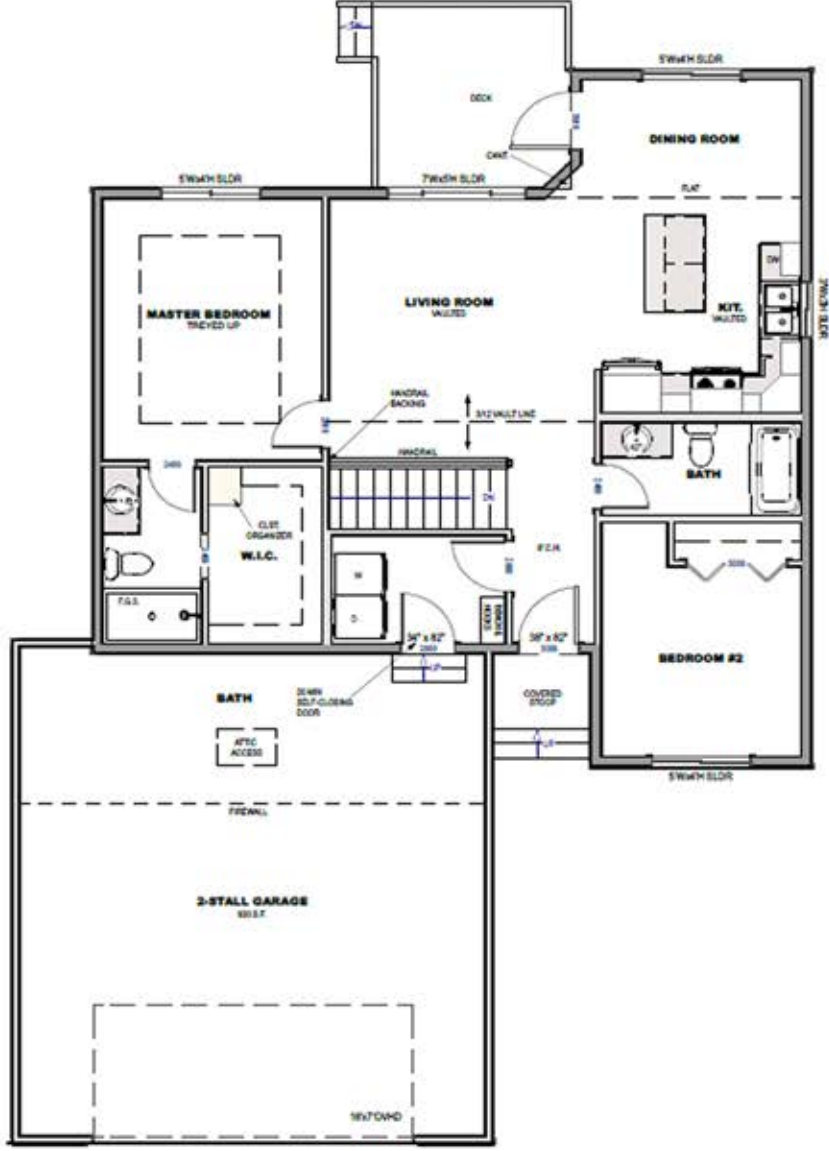
SALES MANAGER | 605.988.4611
LEXIE@NIELSONCONSTRUCTION.NET



605.988.4611 | www.nielsonconstruction.net



605.937.9595 | www.house2homesd.com



white black



Selection package included is for marketing use only. Features and finishes may not be identical to completed home.