

LANDMARK INDUSTRIAL PARK

contractor shops • personal/hobby storage • rental property

TEA, SD

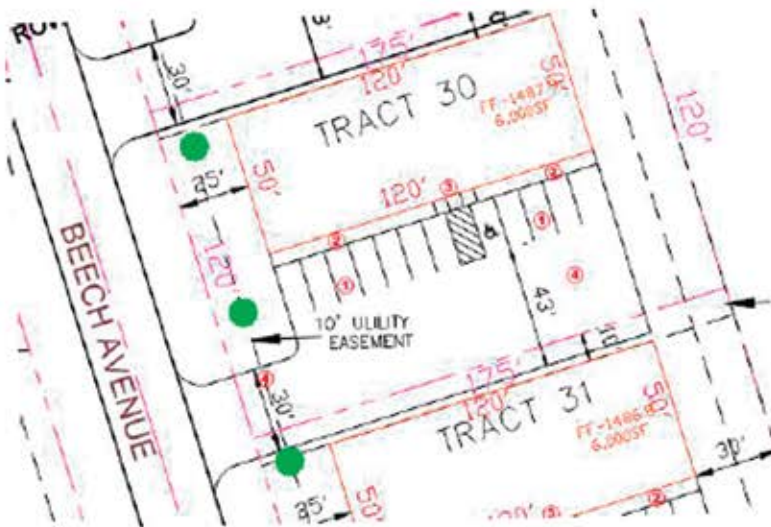


Similar To Image

LANDMARK PERKS:

- Buyer Shop + Rental Investment
- Underground Rough-ins for 2nd Unit
- Located in the booming city of Tea, SD
- Quick access to Interstate 29
- Full asphalt entry & parking lot
- Option to customize space, at additional cost

FLOOR PLAN PROVIDED ON REVERSE



WHAT'S THE NEXT STEP?

Interested in
Landmark Industrial Park
or looking to build?

Call Sandy to get started!

(605)767-3500

LANDMARK INDUSTRIAL PARK

320 BEECH AVENUE

\$784,500

