

7920 PASQUEFLOWER LANE

Sage Meadows - Sioux Falls, SD

\$468,800

7922 PASQUEFLOWER LANE

Sage Meadows - Sioux Falls, SD

\$462,900



TWIN RANCH

Images included in flyer are for marketing purposes only and may not represent completed home. Pricing subject to change.



3 bedrooms



3 bathrooms



3 car garage



2228 sq. ft.



4 bedrooms



3 bathrooms



3 car garage



2093 sq. ft.

Features and Amenities

- ranch style
- corner pantry
- main floor laundry
- steel garage doors
- garage finished thru firetape
- garage man cave
- garage service door
- fully finished
- lower level office
- quartz/onyx counters
- tiled kitchen splash
- tiled master shower
- covered deck & yard

Features and Amenities

- ranch style
- corner pantry
- main floor laundry
- steel garage doors
- garage finished thru firetape
- garage man cave
- garage service door
- fully finished
- quartz/onyx counters
- tiled kitchen splash
- tiled master shower
- covered deck
- yard

Lexie Ricci

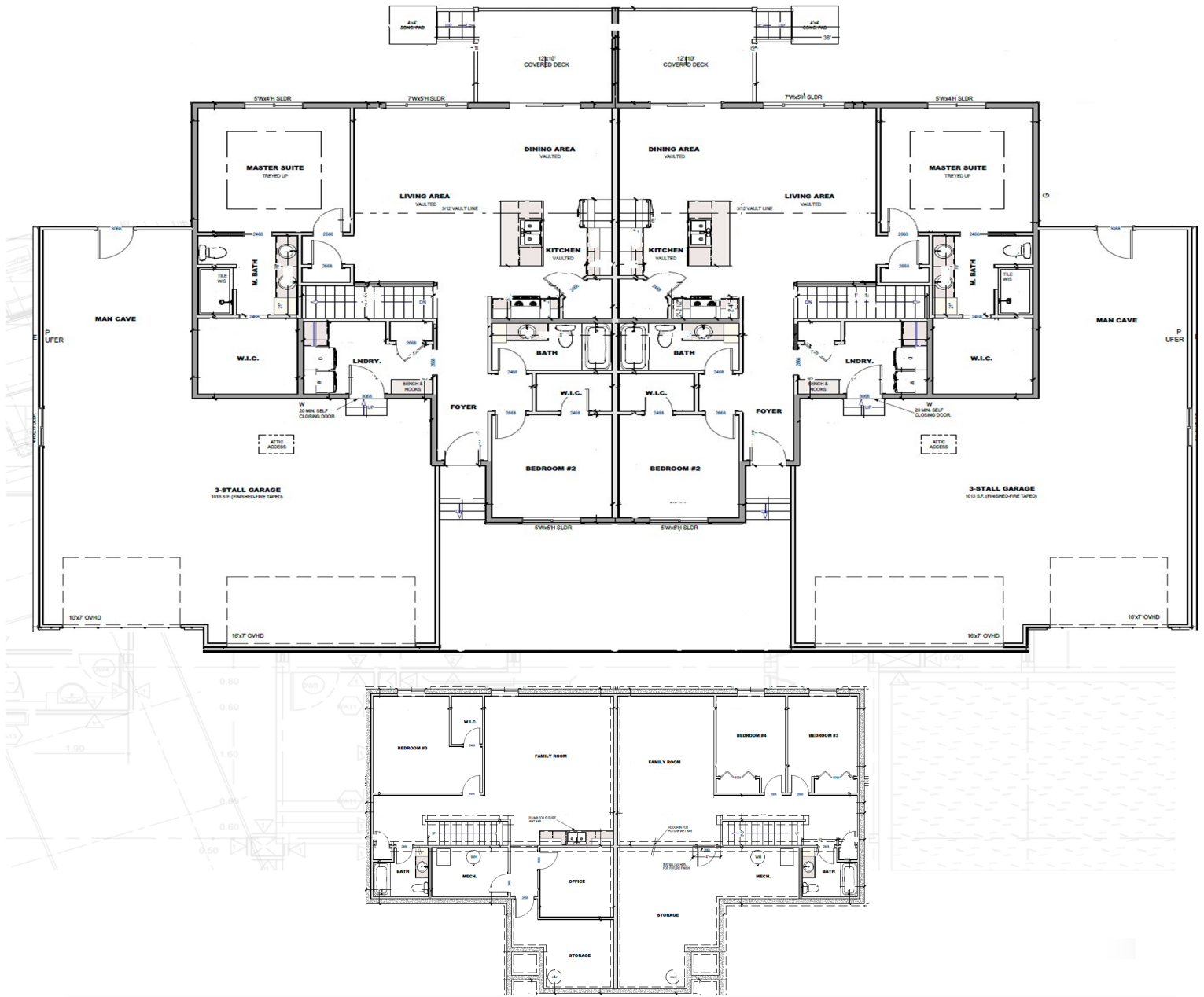
SALES MANAGER | 605.988.4611
LEXIE@NIELSONCONSTRUCTION.NET



605.988.4611 | www.nielsonconstruction.net



605.937.9595 | www.house2homesd.com



natural



Selection package included is for marketing use only. Features and finishes may not be identical to completed home.