

**\$10,000
ANYTHING
ALLOWANCE!**

6813 W Viola Ct



\$371,500

2	BEDS
2	BATHS
3	GARAGE
Ranch	STYLE
1,031	SQ FT
Rosemary	PLAN

Living in Meadow Ridge, on the northwest side of Sioux Falls offers convenient access to major interstates, a friendly neighborhood atmosphere, and proximity to growing communities and amenities. The Rosemary is an open concept, ranch floorplan with 1031 sqft on the main level. This floorplan is located on a walkout lot and entails 2 beds and 2 baths on the main level. There is open living space with vaulted ceilings and a large living room open to the kitchen with a great island that looks to the dining area with sliders to the deck. The bedrooms are separated by the main living area. The master bedroom features a tray ceiling and ¾ bath with a large WIC. The main floor is finished out with mud room off the garage containing the laundry and with a bench and hooks for a great drop zone. The unfinished basement features the potential of 2 more bedrooms, a full bathroom and a large family room. The garage is insulated and finished to firewall.

FEATURED UPGRADES

- LVP Living Room & Hallway
- Walkout Lot
- Standard Yard

Built by:

Nielson
CONSTRUCTION

LISTED BY **HOUSE 2 HOME, LLC**

AMY

605.400.3784

amy@nielsonconstruction.net

AMANDA

605.254.6044

amanda.treloar@nielsonconstruction.net

View

MORE LISTINGS AT

BuiltByNielson.com

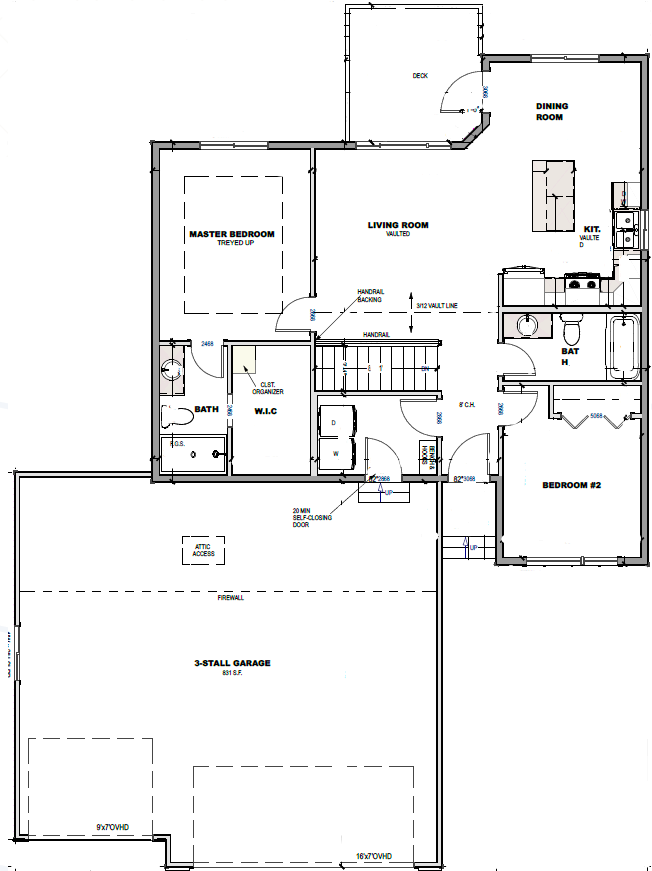
Information deemed reliable but not guaranteed.
Images are for marketing purposes only.

version03182026

FLOOR *plan*

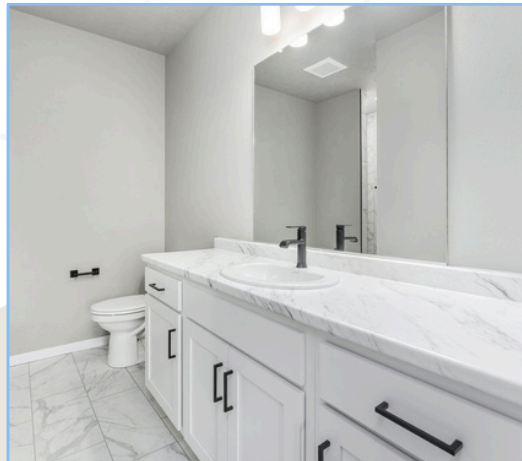
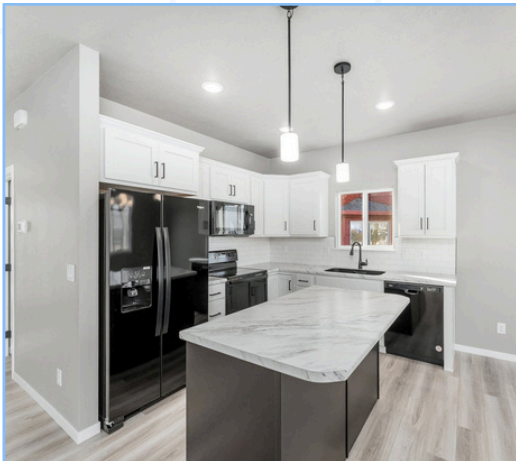
NAME: Rosemary

SQ FT: 1,031



SIMILAR TO IMAGES

White Black



Built by:
Nielson
CONSTRUCTION