

4

BEDS

3

BATHS

3

GARAGE

Multi

STYLE

1814

SQ FT

Memorial

PLAN

\$451,500

New Construction in a desirable neighborhood! This home offers an impressive and welcoming entrance. The open floor plan and striking staircase create an immediate sense of style. Spanning over 1,800 square feet across multiple levels, the layout includes three bedrooms on the same level for convenience. The oversized garage provides ample storage space, complemented by functional entryways featuring benches and hooks at both the front and rear entrances. The L-shaped kitchen is equipped with a generous island, ample countertop space, and a pantry cabinet. The dining area opens to a covered back deck, ideal for entertaining! Upper level, you'll find three bedrooms and the main bathroom, with the primary bedroom featuring a tile walk-in shower and tray ceilings. The finished lower level includes a spacious family room, additional bedroom, laundry area, and a full bathroom. Notable upgrades include a covered deck, insulated garage with fire tape, and a service door.

FEATURED UPGRADES

- Tiled Master Shower
- Finished 3rd Level
- Front Covered Porch w/ Railing
- Dormer Window
- Covered Deck
- Garage Insulated & Firetape
- Garage Service Door
- Standard Yard

Built by:

Nielson
CONSTRUCTION

LISTED BY **HOUSE 2 HOME, LLC**

AMY

605.400.3784

amy@nielsonconstruction.net

AMANDA

605.254.6044

amanda.treloar@nielsonconstruction.net

View

MORE LISTINGS AT

BuiltByNielson.com

Information deemed reliable but not guaranteed.
Images are for marketing purposes only.

version04242026

FLOOR *plan*

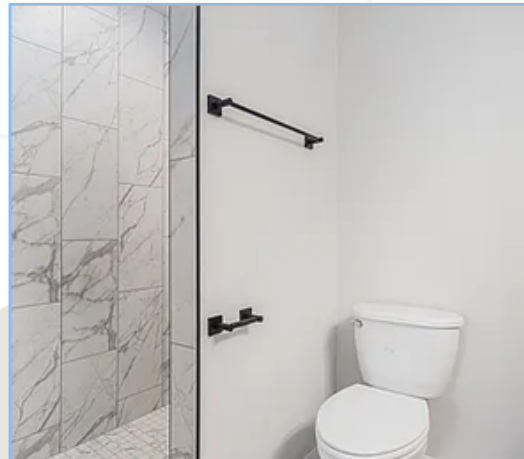
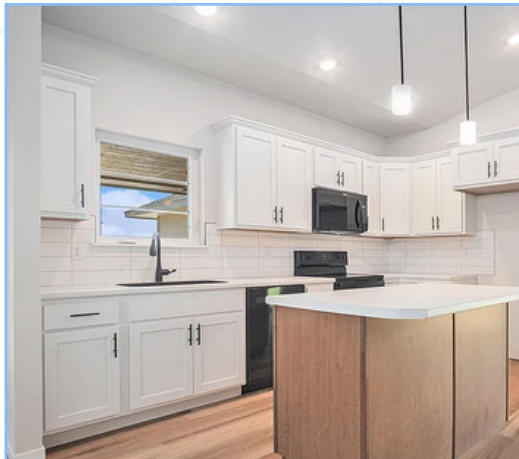
NAME: Memorial

SQ FT: 1,245



SIMILAR TO IMAGES

Natural Stain



Built by:

Nielson
CONSTRUCTION