

# 6849 W Viola Ct

2

BEDS

2

BATHS

3

GARAGE

Ranch

STYLE

1,031

SQ FT

Rosemary

PLAN

**\$368,800**

Living in Meadow Ridge, on the northwest side of Sioux Falls offers convenient access to major interstates, a friendly neighborhood atmosphere, and proximity to growing communities and amenities. The Rosemary is an open concept, ranch floorplan with 1031 sqft on the main level. This floorplan entails 2 beds, 2 baths an open living space with vaulted ceilings and a large living room open to the kitchen with a great island that looks to the dining area with sliders to the deck. The bedrooms are separated by the main living area. The master bedroom features a tray ceiling, tiled walk-in shower, and a large WIC. The main floor is finished out with mud room off the 4-car garage containing the laundry and with a bench and hooks for a great drop zone. The basement features 1031 sqft with the potential of 2 more bedrooms, a full bathroom and a great family room. The garage is insulated and finished through one coat of firetape.

## FEATURED UPGRADES

- Tiled Walk-In Shower
- LVP Living Room & Hallway
- Standard Yard

*Built by:*

**Nielson**  
**CONSTRUCTION**

LISTED BY **HOUSE 2 HOME, LLC**

**AMY**

605.400.3784

[amy@nielsonconstruction.net](mailto:amy@nielsonconstruction.net)

**AMANDA**

605.254.6044

[amanda.treloar@nielsonconstruction.net](mailto:amanda.treloar@nielsonconstruction.net)

*View*

**MORE LISTINGS AT**

**BuiltByNielson.com**

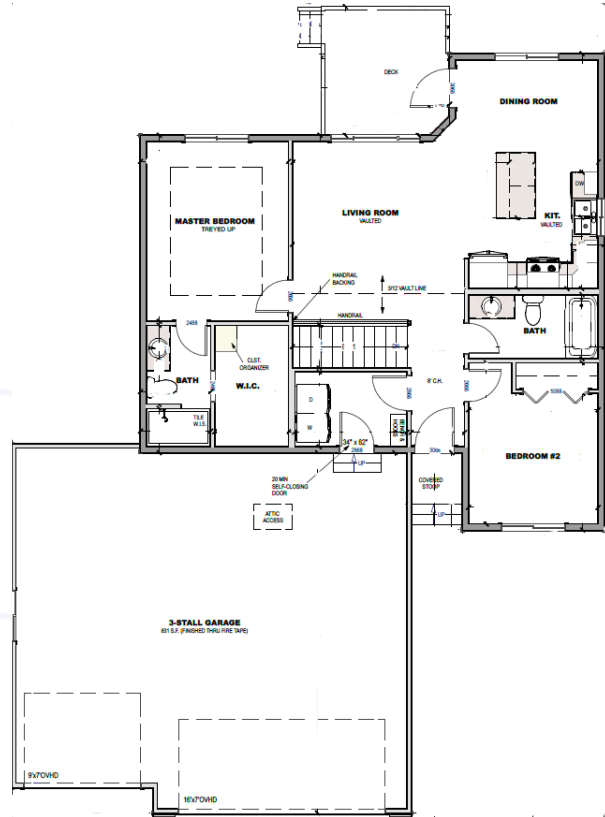
Information deemed reliable but not guaranteed.  
Images are for marketing purposes only.

version03182026

# FLOOR *plan*

**NAME:** Rosemary

**SQ FT:** 1,031



**SIMILAR TO IMAGES**

Stone Oyster



*Built by:*  
**Nielson**  
CONSTRUCTION