



1442	
\$288,800	
2	BEDS
2	BATHS
2	GARAGE
1087	SQ FT
FEATURED UPGRADES	
Finished Garage (Insulation, Texture & Paint)	
Den	
Tiled Master Shower	
Concrete Patio	
Standard Yard	

1440	
\$329,800	
3	BEDS
2	BATHS
2	GARAGE
1280	SQ FT
FEATURED UPGRADES	
Finished Garage (Insulation, Texture & Paint)	
Dual Sink Master Vanity	
Tiled Master Shower	
Concrete Patio	
Standard Yard	

Built by:
Nielson
CONSTRUCTION

Serenity 55+ presents the Serissa slab on grade twin home. These thoughtfully designed twin homes feature open-concept floor plans that create a spacious, inviting feel throughout the main living area. Large windows in the living room fill the home with natural light, making the space feel bright and welcoming. The kitchen, dining, and living areas flow seamlessly together—perfect for everyday living or entertaining. Step outside to a covered patio ideal for relaxing or enjoying the outdoors. The private master suite offers a tray ceiling for added character, along with a tiled walk-in shower and a generous walk-in closet. Convenience continues with an insulated finished garage and a practical drop zone just inside the entry, complete with a bench and hooks for easy organization. Enjoy maintenance free living with lawn care, snow removal, garbage, clubhouse amenities & a pickleball court. HOA is \$175 per month.

LISTED BY **HOUSE 2 HOME, LLC**

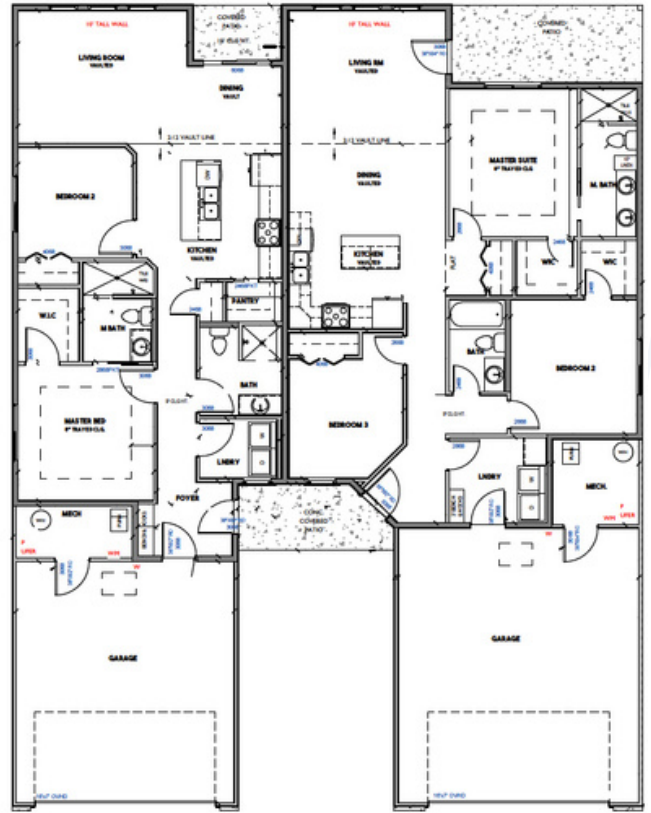
AMY 605.400.3784
 amy@nielsonconstruction.net

AMANDA 605.254.6044
 amanda.treloar@nielsonconstruction.net

View
MORE LISTINGS AT
 BuiltByNielson.com

Information deemed reliable but not guaranteed. Images are for marketing purposes only.

FLOOR plan >>>



SIMILAR TO IMAGES

Natural Stain



Built by:
Nielson
CONSTRUCTION