



1502	
SOLD	
2	BEDS
2	BATHS
2	GARAGE
1087	SQ FT
FEATURED UPGRADES	
Finished Garage (Insulation, Texture & Paint)	
Den	
Tiled Master Shower	
Concrete Patio	
Standard Yard	

1500	
\$329,800	
3	BEDS
2	BATHS
2	GARAGE
1280	SQ FT
FEATURED UPGRADES	
Finished Garage (Insulation, Texture & Paint)	
Dual Sink Master Vanity	
Tiled Master Shower	
Concrete Patio	
Standard Yard	

*Built by:*  
**Nielson**  
 CONSTRUCTION

Serenity 55+ presents the Serissa slab on grade twin home. These thoughtfully designed twin homes feature open-concept floor plans that create a spacious, inviting feel throughout the main living area. Large windows in the living room fill the home with natural light, making the space feel bright and welcoming. The kitchen, dining, and living areas flow seamlessly together—perfect for everyday living or entertaining. Step outside to a covered patio ideal for relaxing or enjoying the outdoors. The private master suite offers a tray ceiling for added character, along with a tiled walk-in shower and a generous walk-in closet. Convenience continues with an insulated finished garage and a practical drop zone just inside the entry, complete with a bench and hooks for easy organization. Enjoy maintenance free living with lawn care, snow removal, garbage, clubhouse amenities & a pickleball court. HOA is \$175 per month.

LISTED BY HOUSE 2 HOME, LLC

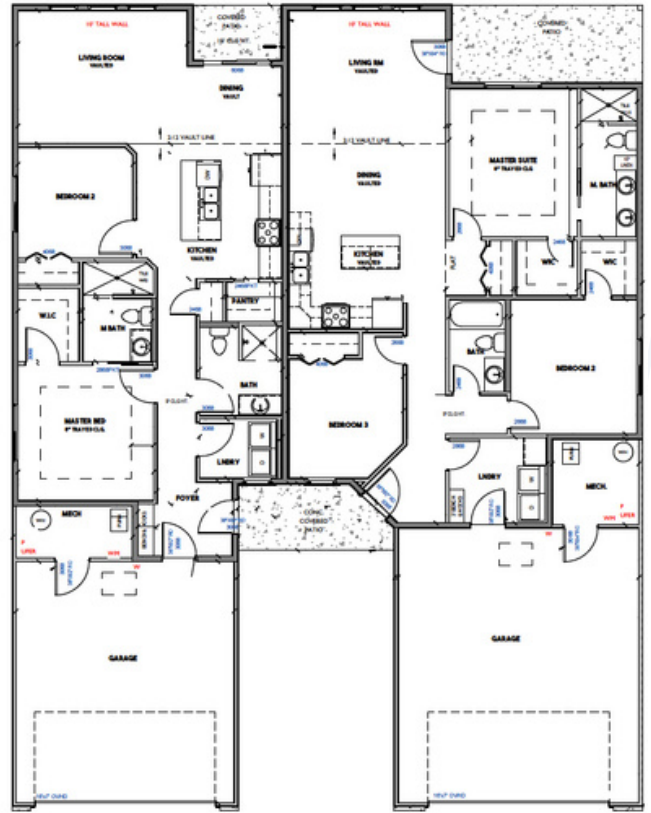
**AMY** 605.400.3784  
 amy@nielsonconstruction.net

**AMANDA** 605.254.6044  
 amanda.treloar@nielsonconstruction.net

*View*  
**MORE LISTINGS AT**  
 BuiltByNielson.com

Information deemed reliable but not guaranteed. Images are for marketing purposes only.

# FLOOR *plan* >>>



SIMILAR TO IMAGES

Chocolate