

\$673,800

5	BEDS
3	BATHS
3	GARAGE
Ranch	STYLE
3,034	SQ FT
Custom	PLAN

This ranch-style home is a well-designed, fully finished floorplan with over 3,000 square feet of living space and upgraded selections throughout. The main level offers 3 bedrooms and 2 bathrooms, including a master suite with a tray ceiling, dual sink vanity, luxurious tiled walk-in shower, and an oversized walk-in closet. Durable LVP flooring flows through the main living areas, where the open-concept living room features an electric fireplace and connects to the kitchen with quartz and onyx countertops, a corner walk-in pantry, and an oversized island. The dining area opens to a covered composite deck with cedar railing and metal spindles—perfect for relaxing or entertaining. The insulated and finished garage (textured and painted) includes a service door, hot/cold spigot, and ample space for projects. The walkout lower level adds two more bedrooms, a full bathroom, a large family room, and a wet bar for easy entertaining.

FEATURED UPGRADES

- Fully Finished
- Vinyl Plank Living Room & Hallway
- Electric Fireplace
- Lower Level Wet Bar
- Tiled Master Shower
- Dual Sink Vanity in Master Bath
- Quartz/Onyx Countertops
- Upgraded Selections
- Covered Composite Deck + Cedar Rail & Metal Spindles,
- Walkout Lot
- Garage Finished (Texture & Paint, Garage Service Door
- Hot/Cold Spigot in Garage

Built by:

Nielson
CONSTRUCTION

View

MORE LISTINGS AT

BuiltByNielson.com

LISTED BY **HOUSE 2 HOME, LLC**

AMY

605.400.3784

amy@nielsonconstruction.net

AMANDA

605.254.6044

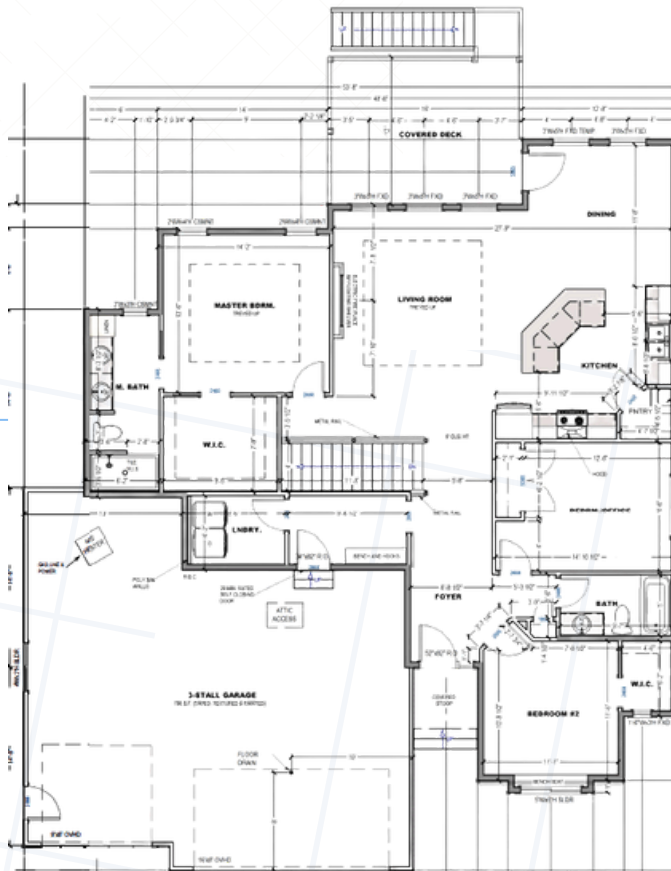
amanda.treloar@nielsonconstruction.net

Information deemed reliable but not guaranteed.
Images are for marketing purposes only.

version03182026

FLOOR *plan*

NAME: Ranch
SQ FT: 3,034



SELECTION PACKAGE

Natural Stain