

\$532,800



4	BEDS
3	BATHS
3	GARAGE
Multi Level	STYLE
2,001	SQ FT
Melrose	PLAN

This walkout multi-level home offers space, style, and smart functionality from top to bottom. The oversized garage includes a service door, floor drain, and comes finished through texture and paint. Inside, you're greeted by a convenient drop zone with a coat closet, bench, hooks, and a half bath -- perfect for daily routines. The main living area features vaulted ceilings and durable luxury vinyl plank flooring across the living, kitchen, and dining spaces. The L-shaped kitchen shines with quartz countertops, a large island, pantry closet, and ample cabinetry. Sliders off the dining room lead to a covered back deck, ideal for outdoor entertaining. Upstairs, you'll find three bedrooms and the main bath. The primary suite includes tray ceilings, a spacious walk-in closet, dual sink vanity, and a beautiful tiled walk-in shower. On the third level, enjoy a large family room, 4th bedroom, full bath, and laundry room complete with cabinet storage and a hanging rod. The unfinished basement offers even more potential -- with space for a 5th bedroom and a large rec room to customize as you please.

FEATURED UPGRADES

- Garden Lot, 3rd level walk out
- Full yard
- Electric Fireplace
- Concrete patio
- Wat Bar rough-ins
- Garage floor drain
- Fully finished garage
- Garage service door
- Covered front door

Built by:
Nielson
CONSTRUCTION

View
MORE LISTINGS AT
 BuiltByNielson.com

LISTED BY **HOUSE 2 HOME, LLC**

AMY 605.400.3784
 amy@nielsonconstruction.net

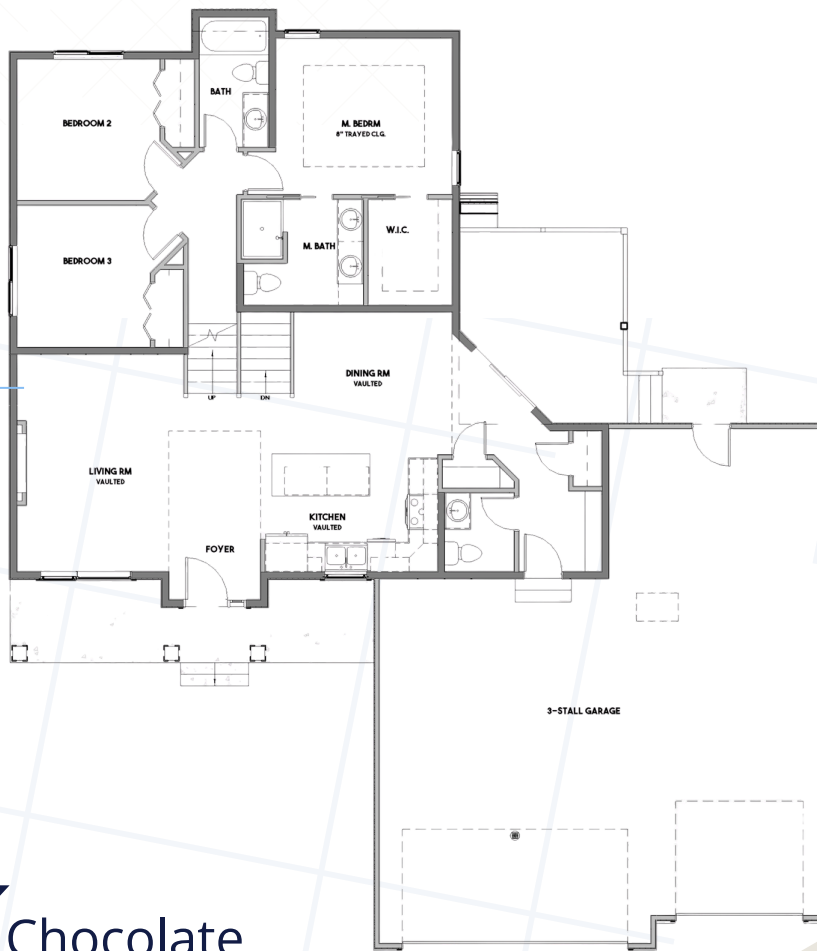
AMANDA 605.254.6044
 amanda.treloar@nielsonconstruction.net

Information deemed reliable but not guaranteed.
 Images are for marketing purposes only.

FLOOR *plan*

NAME: Melrose

SQ FT: 2,001



SELECTION PACKAGE

Chocolate

Built by:

Nielson
CONSTRUCTION