



**\$416,800**

<b>3</b>	BEDS
<b>2</b>	BATHS
<b>3</b>	GARAGE
<b>Split Foyer</b>	STYLE
<b>1,750</b>	SQ FT
<b>Spaniel</b>	PLAN

Hascall Addition in Pinnacle Estates in Tea, SD offers a small-town charm with a strong sense of community, nearby excellent schools, and in in close proximity to Sioux Falls amenities. The Spaniel is an open concept, split level floorplan with 1250 sqft on the main level. This floorplan entails 3 beds, 2 baths and an open living area with vaulted ceilings, large living room open to the kitchen with pantry cabinet & an island that looks to the dining area. The dining area has a slider to the deck. The primary bedroom features a tray ceiling with ensuite and large walk in closet. The main floor is finished out with two additional bedrooms, a full bath, and main floor laundry room. The walkout basement features a finished family room with sliders to a patio and the potential of two additional bedrooms and bathroom. Garage is finished through firewall and insulated behind sheetrock.

## FEATURED UPGRADES

- Tiled Master Shower
- Pantry Cabinet
- LL Family Room Finished
- Walkout

*Built by:*

**Nielson**  
**CONSTRUCTION**

LISTED BY **HOUSE 2 HOME, LLC**

**AMY**

605.400.3784

[amy@nielsonconstruction.net](mailto:amy@nielsonconstruction.net)

**AMANDA**

605.254.6044

[amanda.treloar@nielsonconstruction.net](mailto:amanda.treloar@nielsonconstruction.net)

*View*

**MORE LISTINGS AT**

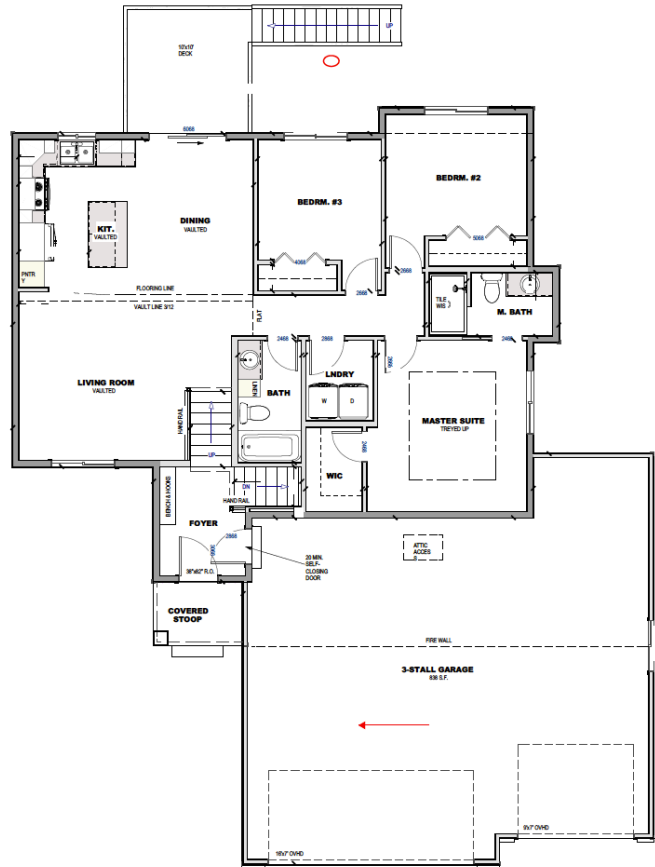
**BuiltByNielson.com**

Information deemed reliable but not guaranteed.  
Images are for marketing purposes only.

version03192026

# FLOOR *plan*

**NAME:** Spaniel  
**SQ FT:** 1,750



**SIMILAR TO IMAGES**

Natural



*Built by:*  
**Nielson**  
CONSTRUCTION