

\$393,800



2	BEDS
2	BATHS
3	GARAGE
Ranch	STYLE
1,236	SQ FT
Robin	PLAN

Hascall Addition in Pinnacle Estates in Tea, SD, offers a small-town charm with a strong sense of community, nearby excellent schools, and is in close proximity to Sioux Falls amenities. The Robin is an open concept, ranch-style floorplan with 1236 sqft on the main level. This floorplan entails 2 beds, 2 baths an open living space with vaulted ceilings and a large living room open to the kitchen with upgraded black stainless appliances, a walk-in pantry, and an island open to the dining area. The dining area has sliders to the deck for seamless entertaining. The master bedroom features a trey ceiling and ¾ bath with a dual sink vanity, a tiled walk-in shower, and a large WIC. The main floor is complete with an additional bedroom and laundry, featuring a dropzone with a bench and hooks off the garage. The basement offers potential for 2 additional bedrooms, a full bathroom, and a second living space. The garage features a service door, is insulated, and finished to firewall.

### FEATURED UPGRADES

- Tiled Master Shower
- Walk-In Pantry
- Black Stainless Appliances
- Garage Service Door

*Built by:*

**Nielson**  
**CONSTRUCTION**

*View*

**MORE LISTINGS AT**  
BuiltByNielson.com

LISTED BY **HOUSE 2 HOME, LLC**

**AMY**

605.400.3784

amy@nielsonconstruction.net

**AMANDA**

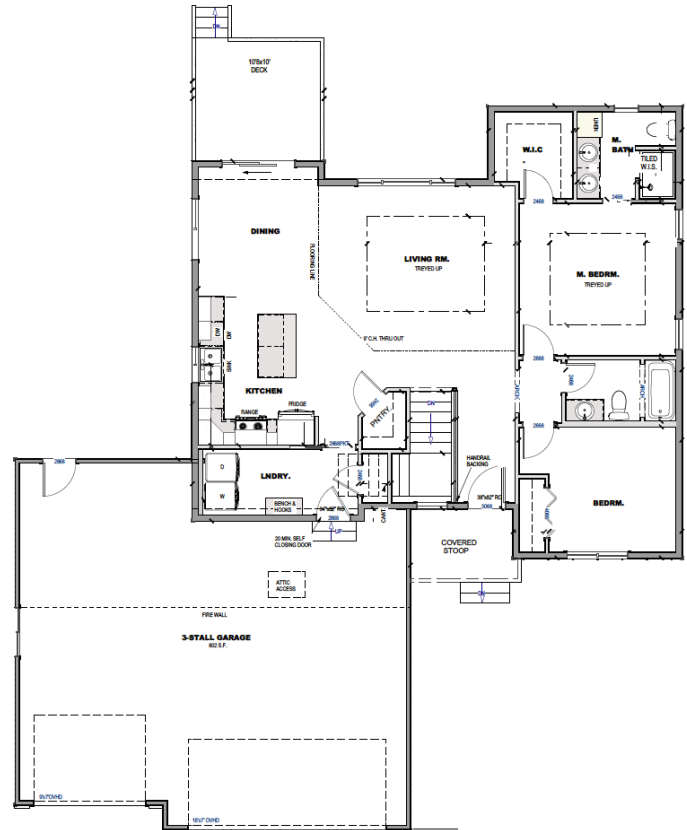
605.254.6044

amanda.treloar@nielsonconstruction.net

# FLOOR *plan*

**NAME:** Robin

**SQ FT:** 1,236



**SIMILAR TO IMAGES**

Natural Stain



*Built by:*

**Nielson**  
CONSTRUCTION