

\$332,800



2	BEDS
2	BATHS
2	GARAGE
Slab	STYLE
1,200	SQ FT
Summit	PLAN

Pinnacle Estates in Tea, SD offers a small-town charm with a strong sense of community, nearby excellent schools, and is in close proximity to Sioux Falls amenities. The Summit features a zero-entry design with 1,200 sq ft of thoughtfully planned living space, including 2 bedrooms, 2 bathrooms, and a versatile extra room ideal for a home office or den. The open-concept kitchen, dining, and living areas are finished with luxury vinyl plank flooring and highlighted by a soaring vaulted ceiling that enhances the bright, spacious feel. Sliding doors lead to the patio, creating the perfect setup for indoor-outdoor entertaining. The primary suite offers a tray ceiling and a private bath with a dual-sink vanity, completing this well-designed and functional home. The garage is insulated and finished to firewall.

### FEATURED UPGRADES

- Tiled Master Shower
- Dual Sink Vanity
- LVP Living Room & Hallway
- Office/Den
- Concrete Patio

*Built by:*

**Nielson**  
CONSTRUCTION

*View*

**MORE LISTINGS AT**  
BuiltByNielson.com

LISTED BY **HOUSE 2 HOME, LLC**

**AMY**

605.400.3784

amy@nielsonconstruction.net

**AMANDA**

605.254.6044

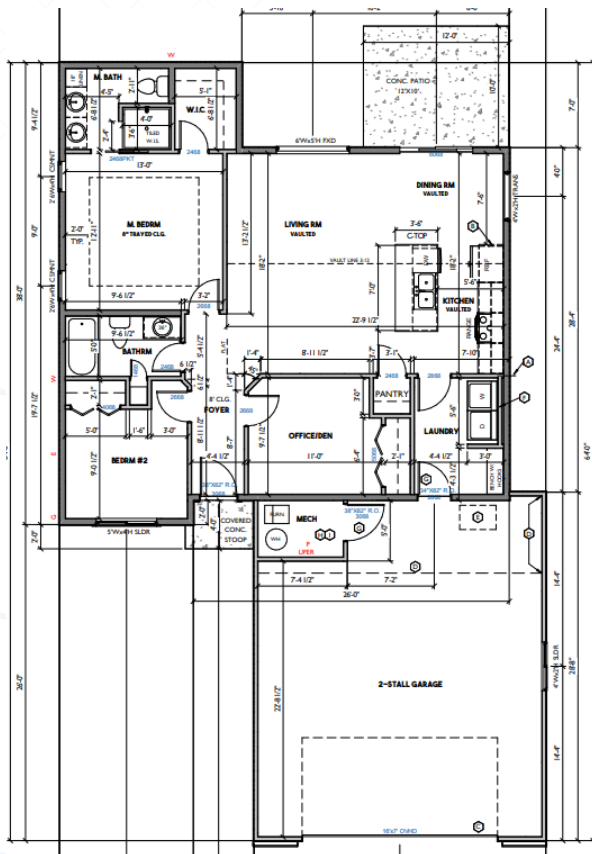
amanda.treloar@nielsonconstruction.net

Information deemed reliable but not guaranteed.  
Images are for marketing purposes only.

# FLOOR plan

**NAME:** Summit

**SQ FT:** 1,200



**SIMILAR TO IMAGES**

White Black



*Built by:*  
**Nielson**  
CONSTRUCTION