



\$568,800

5	BEDS
3	BATHS
3	GARAGE
Ranch	STYLE
2,546	SQ FT
Ranchero	PLAN

Living on the east side of Sioux Falls offers a growing community with excellent schools, convenient access to shopping and dining, and a balance of suburban comfort with city amenities. The Ranchero is an open-concept ranch floorplan offering 1,385 sq ft on the main level and 1,161 sq ft in the fully finished basement. The main living space features a spacious living room with vaulted ceilings and LVP flooring throughout the living room and hallway, seamlessly connecting to the galley kitchen and dining area. The kitchen is highlighted by quartz countertops, upgraded selections, a large island, pantry, and a swing door leading to the covered deck. The main level includes two secondary bedrooms plus a private primary suite with a tray ceiling, large walk-in closet, and a ¾ bath featuring a tiled walk-in shower. Convenient main-floor laundry with a bench and hooks is located just off the garage. The finished basement adds two additional bedrooms, a full bathroom, and a large family room. Situated on a walkout lot with no backyard neighbors, this home offers both space and privacy. The garage is insulated and finished to firewall.

FEATURED UPGRADES

- Fully Finished
- Tiled Master Shower
- Vinyl Plank Living Room & Hallway
- Quartz/Onyx Countertops
- Covered Deck
- Walkout Lot
- No Backyard Neighbors

Built by:

Nielson
CONSTRUCTION

View

MORE LISTINGS AT

BuiltByNielson.com

LISTED BY **HOUSE 2 HOME, LLC**

AMY

605.400.3784

amy@nielsonconstruction.net

AMANDA

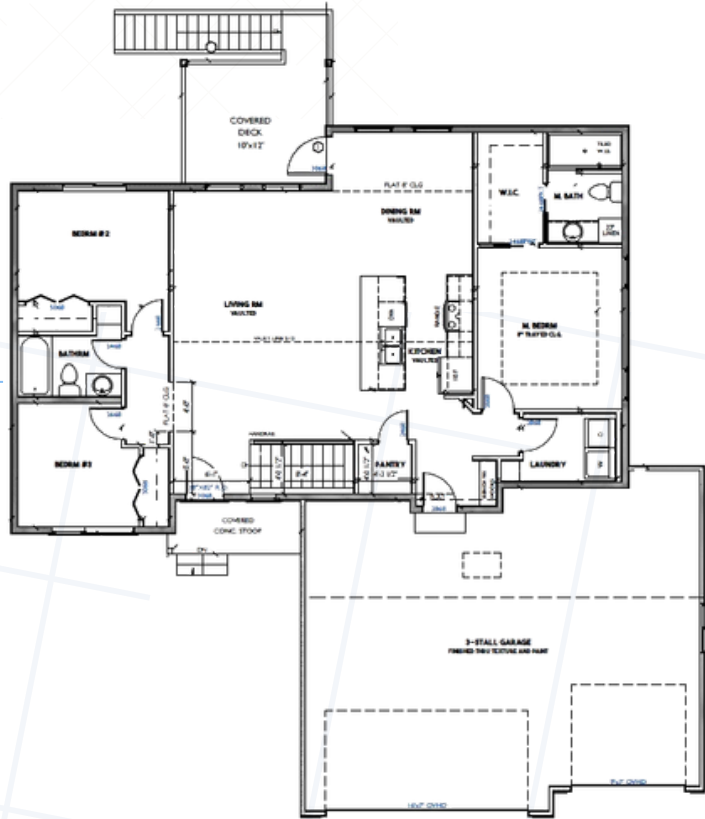
605.254.6044

amanda.treloar@nielsonconstruction.net

Information deemed reliable but not guaranteed. Images are for marketing purposes only.

FLOOR *plan*

NAME: Ranchero
SQ FT: 2,546



SIMILAR TO IMAGES

Neutral



Built by:
Nielson
CONSTRUCTION