



6405	6403	6401
\$324,800	\$315,800	SOLD
4 BEDS	3 BEDS	4 BEDS
3 BATHS	3 BATHS	3 BATHS
2 GARAGE	2 GARAGE	2 GARAGE
1000/689 SQ FT	1000/625 SQ FT	1000/665 SQ FT
FEATURED UPGRADES	FEATURED UPGRADES	FEATURED UPGRADES
Full Yard Walk-In Pantry Main Floor Laundry HOA	Full Yard Walk-In Pantry Main Floor Laundry Walkout HOA	Full Yard Walk-In Pantry Main Floor Laundry Walkout HOA

East Prairie is one of Nielson Construction's newest communities on the edge of Sioux Falls off Veteran's Parkway. These spectacular townhome floor plans are fully finished with 3-4 bedrooms, 3 baths and 2 stalls. The kitchens have a large walk-in pantry & island open to the living room with sliders to the deck. The master bedrooms include a WIC, and bathroom with ¾ shower. The main floor is finished off with a 2nd bedroom with a WIC, main bath and main floor laundry. HOA fee is \$145 per month and includes lawn, snow removal, and trash.

Built by:

Nielson
CONSTRUCTION

LISTED BY **HOUSE 2 HOME, LLC**

AMY

605.400.3784

amy@nielsonconstruction.net

AMANDA

605.254.6044

amanda.treloar@nielsonconstruction.net

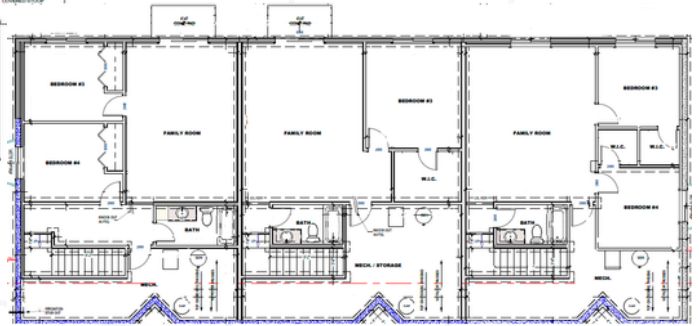
View

MORE LISTINGS AT

BuiltByNielson.com

Information deemed reliable but not guaranteed. Images are for marketing purposes only.

FLOOR *plan* >>>



SIMILAR TO IMAGES

White Black



Built by:
Nielson
CONSTRUCTION

This floor plan including furniture, measurements and dimensions are approximate and for illustration only. BoxBrownie.com gives no guarantee, warranty or representation as to the accuracy and layout. All inquires must be directed to the agent, vendor or party representing this floor plan.