



2033		2031	
<b>\$421,800</b>		<b>\$384,800</b>	
2	BEDS	2	BEDS
2	BATHS	2	BATHS
3	GARAGE	2	GARAGE
1330	SQ FT	1210	SQ FT
FEATURED UPGRADES		FEATURED UPGRADES	
Den	Quartz/Onyx Countertops	Tiled Master Shower	LVP Living Room & Hallway
Upgraded Selections	Tiled Master Shower	Composite Deck	Oversized Garage
LVP Living Room & Hallway	Oversized Covered Composite Deck	Finished Garage (Insulation, Texture, Paint)	Garage Hot & Cold Spigot
Yard	HOA	Yard	HOA

*Built by:*

**Nielson**  
CONSTRUCTION

LISTED BY **HOUSE 2 HOME, LLC**

**AMY**

605.400.3784

amy@nielsonconstruction.net

**AMANDA**

605.254.6044

amanda.treloar@nielsonconstruction.net

Westview Estates in Sioux Falls offers high-end twin homes units with sleek finishes and spacious living areas, perfect for entertaining. This home offers an open floor plan with beautiful LVP flooring in the hallway and living room, sleek quartz countertops, and a kitchen designed for both function and style—complete with a corner walk-in pantry and center island. A bright and versatile den offers the perfect space for a home office, hobby room, or reading nook. The sun-filled dining and living spaces flow to an oversized covered deck with durable composite decking—ideal for entertaining or simply enjoying the outdoors in comfort and style. The primary suite is a true retreat, featuring a large walk-in closet and a spa-inspired en-suite bath with dual sinks and a beautifully tiled walk-in shower. The unfinished lower level has potential for two additional bedrooms, a full bathroom, and a spacious family room—perfect for guests or extra living space. Additional highlights include a fully finished and oversized 3-stall garage with texture and paint, a hot and cold-water spigot, and a fully landscaped yard. The HOA takes care of lawn care, snow removal, and more—providing truly low-maintenance living without compromising on luxury.

*View*

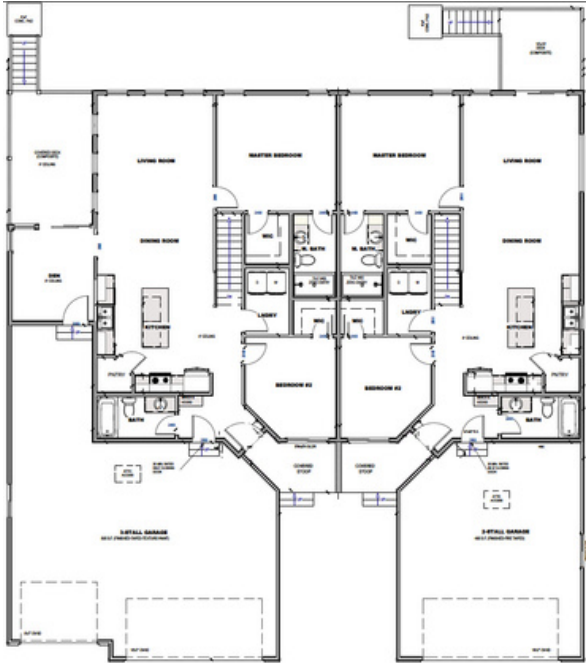
**MORE LISTINGS AT**

[BuiltByNielson.com](http://BuiltByNielson.com)

Information deemed reliable but not guaranteed. Images are for marketing purposes only.

version04272026

# FLOOR *plan* >>>



**SIMILAR TO IMAGES**

Natural Stain



*Built by:*  
**Nielson**  
CONSTRUCTION